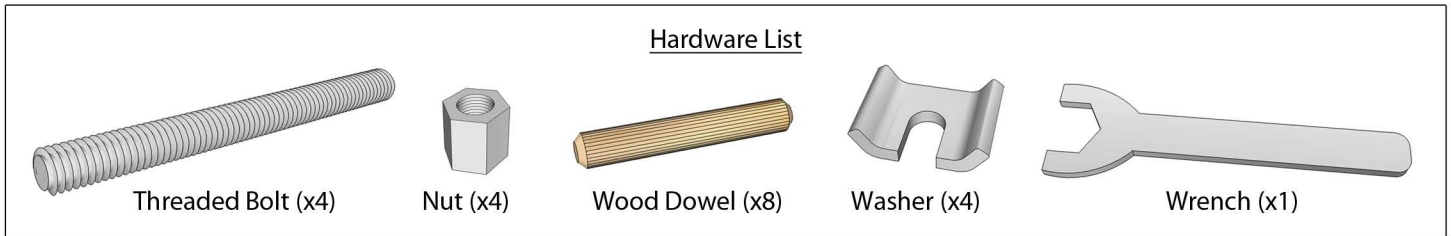
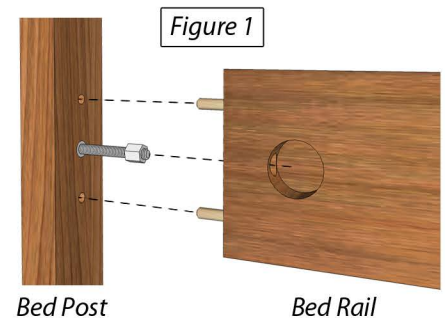


HARDWARE INSTRUCTIONS

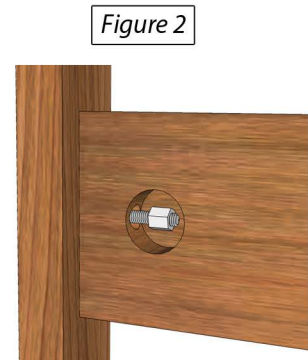
How to Attach Bed Rails



- 1) Screw the threaded stud into the center threaded insert until it stops. See *Figure 1*.
- 2) Screw the nut 3-6 turns onto the end of the threaded stud. See *Figure 1*.
- 3) Insert the wood dowels into the top and bottom holes on the end of the rail. See *Figure 1*.



- 4) Align the center hole in the end of the rail with the nut and threaded stud in the bed post. See *Figure 1*.
- 5) Slide the rail over the nut and guide the dowels into the mating holes in the bed post. See *Figure 2*.



- 6) Place the curved washer in behind the nut. See *Figure 3*.
- 7) Tighten the nut with the wrench provided. The nut should be snug but not overly tight. See *Figure 4*.

